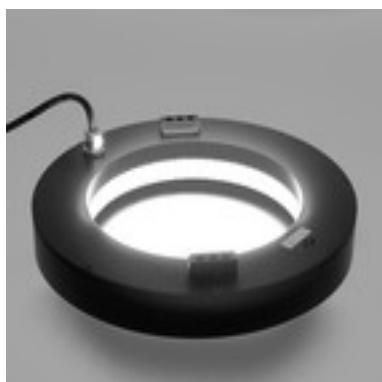


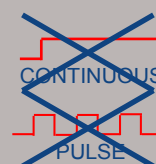
Dark field flash light DFL150FL - Technical data



- LED Dark field flash light for flash operation
- light field diameter 150 mm
- 240 high performance 5 SMD LEDs
- integrated diffusor
- integrated illumination controller
- brightness can be regulated internally (potentiometer) or externally with a VC analogue input
- adjustable flash times up to 220 µs
- different trigger modes
- robust industrial model, Aluminium casing, IP40
- drag chain cable

630

x=0,30
y=0,31

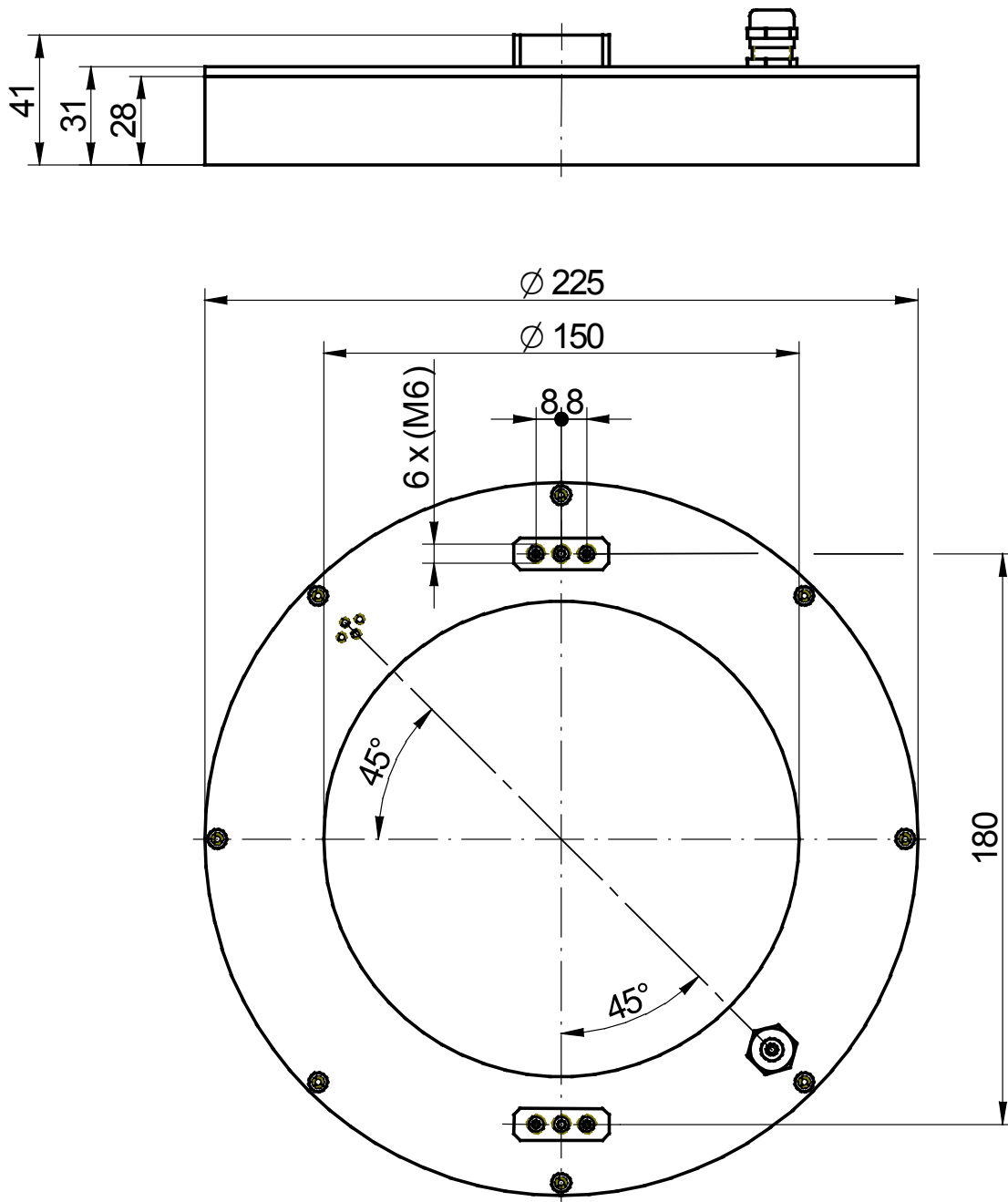


Model	Colour / Wavelength (nm)	Operating voltage UB (V)	Operating current I (A) / 24 V
DFL150FL-R	red / 630	19 - 30	1,1
DLF150FL-W	white / x=0,30 y=0,31	19 - 30	1,1

Operation mode	Flash	
Trigger modes	TTL / PLC	TTL: rising slope at trigger input , min. 2,8 V DC, max. 30 V DC PLC: rising slope at trigger input, min. 15 V DC, max. 30 V DC
Flash times	10 - 100 µs / 20 - 220 µs	adjustable with the potentiometer, max. flash frequency 100 Hz or 35 Hz
Brightness regulation	Potentiometer / VC	Potentiometer 0 - 100 % (deactivated on VC - models) VC brightness regulation 0 - 10 % when connected to a voltage of 1 - 10 V DC on the VC analogue input (only the VC - model >>> observe the order data)
Operation temperature	0 - 45 °C / 32 - 113 °F	
Weight	1,0 kg	
Protection class	IP 40	
Connection cable	1,5 m	drag chain cable, bending radius at least 72 mm

Wiring		
brown	+19...30 V DC	+ Operating voltage (max. 30 V)
white	GND	GND Operating voltage
yellow	+1...10 V DC	VC analog input brightness regulation
green (green/yellow)	earth	earth connection
pink	+ Trigger	TTL / PLC, rising slope
blue	- Trigger	GND Trigger

Dark field flash light DFL150FL - Technical drawing



Dark field flash light DFL150FL - Order data

Composition of the product name

Model	Diffusor	Illumination colour	Brightness regulation	Trigger	Flash time
SQ / CRC/...	ALK - incident light, clear screen ALD - incident light, diffused, satin screen ALF - incident light fresnel lens (f=100 mm) DL - transmitted light, highly diffused, white screen POL - polarisation filter	R - red IR - infrared W - white B - blue G - green UV - ultraviolet	VC - VC analogue input active free - Potentiometer active	PLC TTL	10...100 µs 20...220 µs

DFL150FL - integrated diffusor	
Product number	Product name
11.43.021	DFL150FL-R/SPS-100
11.43.022	DFL150FL-R/TTL-100
11.43.023	DFL150FL-R/VC/SPS-100
11.43.024	DFL150FL-R/VC/TTL-100
11.43.025	DFL150FL-R/SPS-220
11.43.026	DFL150FL-R/SPS-220
11.43.027	DFL150FL-R/VC/SPS-220
11.43.028	DFL150FL-R/VC/SPS-220
11.43.029	DFL150FL-W/SPS-100
11.43.030	DFL150FL-W/TTL-100
11.43.031	DFL150FL-W/VC/SPS-100
11.43.032	DFL150FL-W/VC/TTL-100
11.43.033	DFL150FL-W/SPS-220
11.43.034	DFL150FL-W/SPS-220
11.43.035	DFL150FL-W/VC/SPS-220
11.43.036	DFL150FL-W/VC/SPS-220